



**Illinois Department of Financial and Professional Regulation**

**Division of Professional Regulation**

**ROD R. BLAGOJEVICH**  
Governor

**DEAN MARTINEZ**  
Secretary

**Daniel E. Bluthardt**  
Director  
Division of Professional Regulation

**MEMORANDUM**

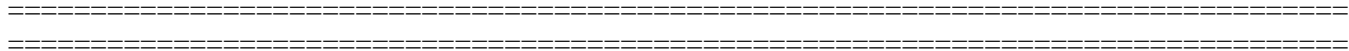
**TO: ADVISORY BOARD FOR THE ILLINOIS CENTER FOR NURSING**

- Susan Campbell, Member
- Kathryn Christiansen, Member
- Nancy Cutler, Member
- Linda Fahey, Member
- Donna Hartweg, Member
- Mary Lebold, Member
- Marcia Maurer, Member
- Donna Meyer, Member
- Jim Renneker, Member
- Maureen Shekleton, Member
- Deborah Terrell, Member

**FROM:** Michele L. Bromberg MSN, APN, BC, Chairperson ICN  
Nursing Coordinator  
IL Department of Financial & Professional Regulation  
Division of Professional Regulation

**DATE:** July 30, 2008

**RE: ADVISORY BOARD MEETING – August 14, 2008**



The Illinois Center for Nursing will convene for a business meeting at **10:00 a.m. on Thursday, August 14, 2008, at the Springfield office of the Department, 320 West Washington, Fifth Floor, Conference Room. Please afford me the courtesy of contacting me at 312/ 814-3039, if you are unable to attend (to ensure a quorum is present).** The agenda is herewith attached.

The meeting will be accessible to handicapped individuals in compliance with Executive Order #5 and pertinent state and federal laws upon notification of anticipated attendance. Handicapped persons planning to attend and needing special accommodations should contact me at 312/814-3039, at least five days prior to the meeting to inform of their attendance.

Attachment

**The Illinois Center for Nursing  
Advisory Board Agenda  
July 30, 2008**

ANNOUNCEMENTS

- 10:00 AM
1. Review and approval of minutes from June 5, 2008
  2. Outreach/communication

OLD BUSINESS

- 10:15 AM
1. DOL, RWJF, AARP National Education Capacity Summit Update
  2. National Conference on Workforce Centers, summary of annual meeting

NEW BUSINESS

- 11:00 AM
1. Nurse Educator Fellows
    - a. Remarks Daniel E. Bluthardt, IDFPR and Judy Erwin, IBHE
    - b. Nurse Educator Fellow Introductions and Presentations
    - c. IBHE Nurse Educator Fellowship Program- does it help to ensure the retention of well-qualified nursing faculty members?
  2. Discussion:
    - a. Faculty Development
      - i. Mentorship Programs
      - ii. Transition from Clinician to Educator
      - iii. Expert Clinician to Novice Faculty

- 2:00 PM
- ADJOURNMENT